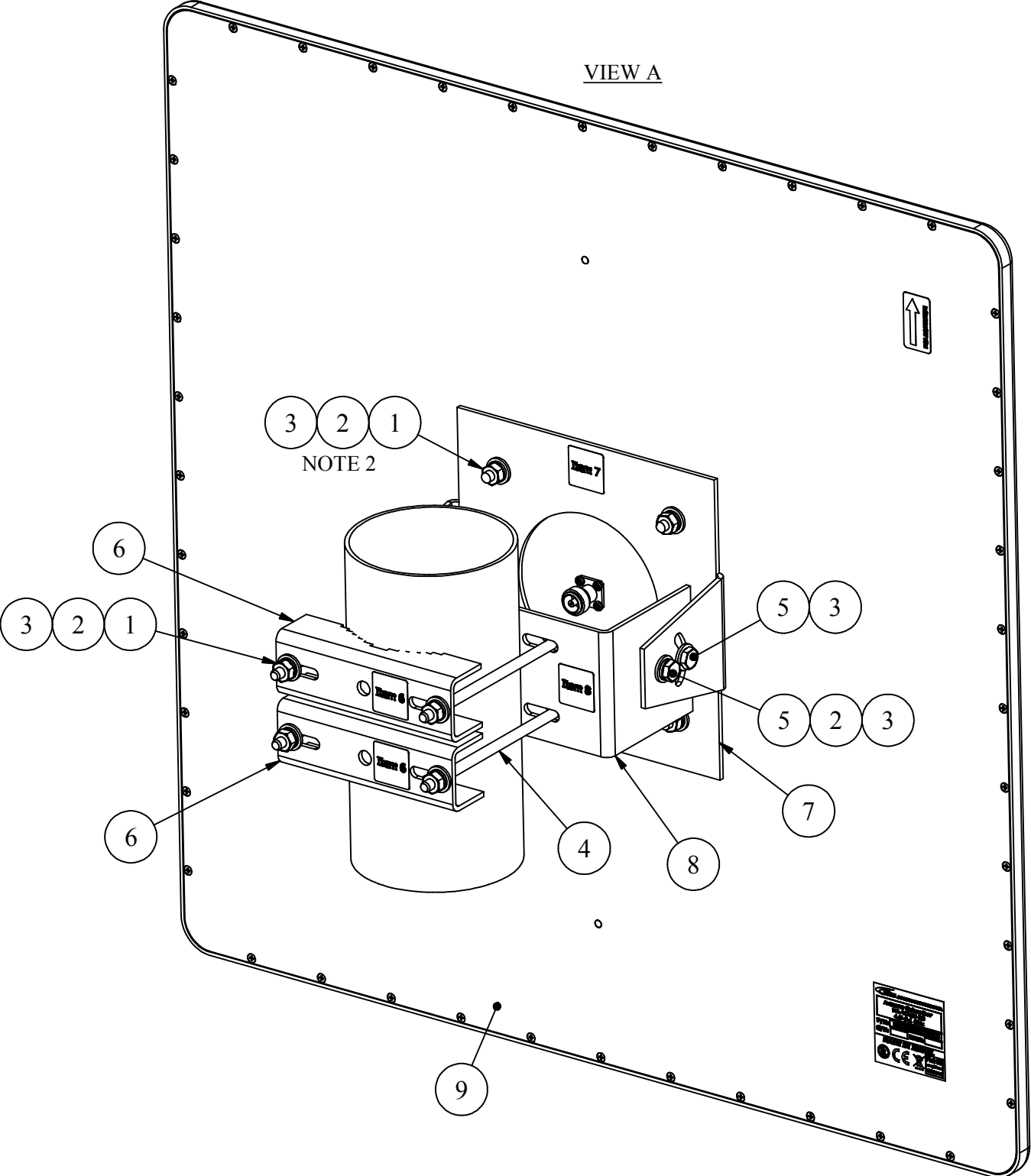


MOUNTING INSTRUCTIONS

Verify that all parts have been received according to the following:

ITEM	DESCRIPTION	QTY	LOCATION
1	NUT NC 1/4-20	10	Inside Case near Antenna, in Nylon Bag
2	Helical Spring Lock Washer #1/4	12	Inside Case near Antenna, in Nylon Bag
3	Plain Washer #1/4	16	Inside Case near Antenna, in Nylon Bag
4	Hex Cap Screw NC 1/4-20 x 110	4	Inside Case near Antenna, in Nylon Bag
5	Hex Cap Screw NC 1/4-20 x 3/4	4	Inside Case near Antenna, in Nylon Bag
6	CLAMP	2	Inside Case near Antenna, wrapped in Nylon
7	PLATE	1	Inside Case near Antenna, wrapped in Nylon
8	BASE	1	Inside Case near Antenna, wrapped in Nylon
9	Antenna	1	Package, wrapped in bubble Nylon

VIEW A



Assembly sequence notes

- 1) Align holes of Plate item 7 with studs of Antenna item 9. Put Plate onto Antenna (view A, sheet 2).
- 2) Put on each of the 4 Antenna's studs Plain Washer item 3, Spring Washer item 2 and screw them with Nut item 1 (view A, sheet 2; view B, sheet 3). Tighten the 4 Nuts at a torque of 50 lb*in.
- 3) Place 2 Clamps item 6 & Base item 8 touch to the Pole (see views).
- 4) Insert 4 Screws item 4 into the slots of Base item 8 and through the slots of Clamps item 6. Put on each Screw's end protruding from Clamps Plain Washer item 3, Spring Washer item 2 & screw them with Nut item 1 (view B, view C, sheet 3). Tighten 4 Nuts item 1 at a torque of 266 lb*in.
- 5) Adjust 2 slots & 2 holes of Plate item 7 to the 4 holes of Base item 8 (view B, view C, sheet 3).
- 6) Insert Screw item 5 with Plain Washer item 3 & Spring Washer item 2 into each hole at the arms' end of Plate item 7 and through Base item 8. Screw until contact (view B, view C, sheet 3).
- 7) Insert Screw item 5 with Plain Washer item 3 into the arc slot of Plate item 7 and through Base item 8. Put on Screw's end protruding from Base's arm Plain Washer item 3, Spring Washer item 2 & screw them with Nut item 1. Make the same for the second arc slot. Tighten the 2 Nuts item 1 until contact (view B, view C, sheet 3).
- 8) Adjust Antenna item 9 at an angle you need using Plate item 7.
- 9) Tighten the 4 Screws item 5 at a torque of 266 lb*in.

